

State of Wyoming Corner Record

(In compliance with the *CORNER PERPETUATION AND FILING ACT*, Wyoming Statutes, 1997, Section 33-29-140, et seq., and the Rules and Regulations of the Board of Registration for Professional Engineers and Professional Land Surveyors)

Reverse side of this form may be used if more space is needed.

Record of original survey and citation of source of historical information (if corner is lost or obliterated). Description of corner monumentation evidence found and/or monument and accessories established to perpetuate the location of this corner. Sketch of relative location of monument, accessories, and reference points with course and distance to adjacent corner(s) (if determined in this survey). Method and rationale for reestablishment of lost or obliterated corner.

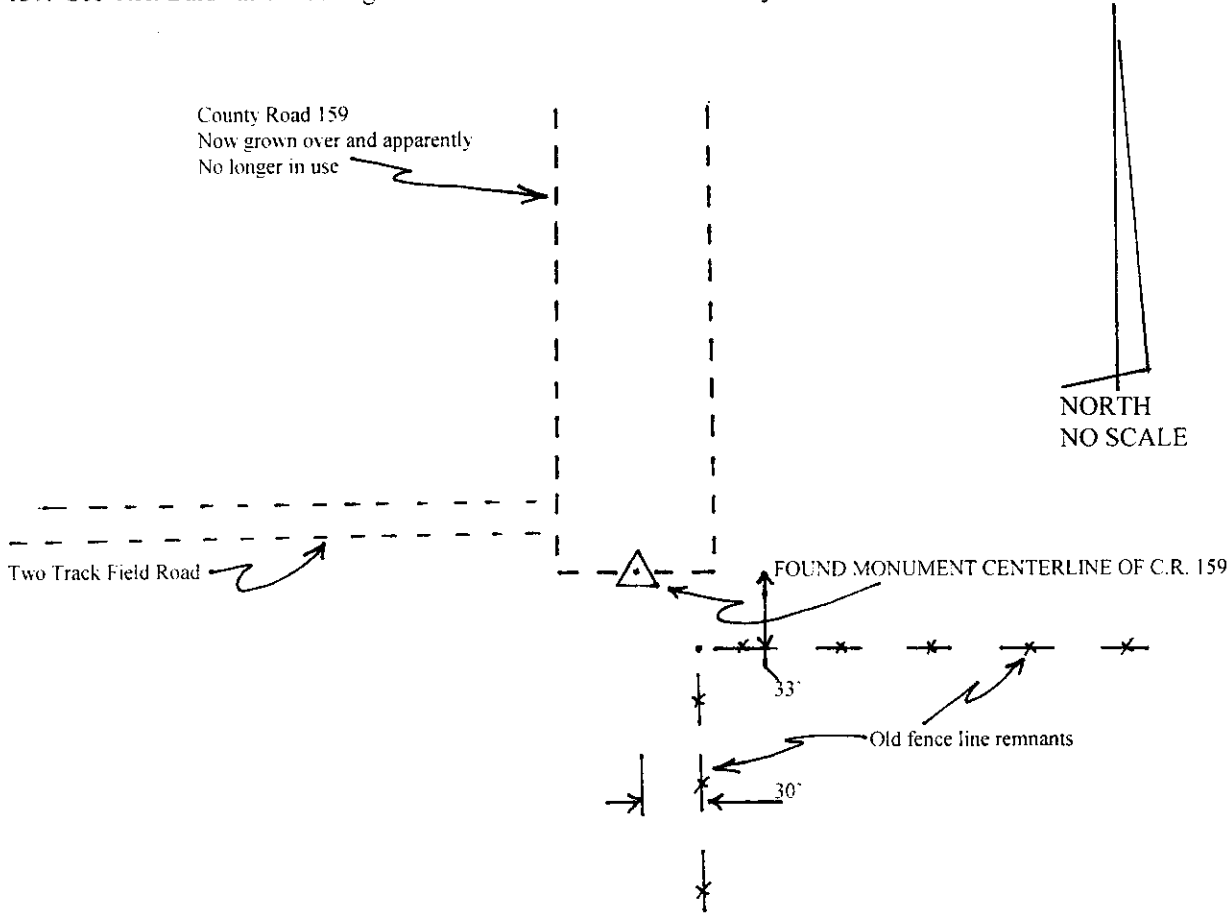
Section Corner: 11, 12, 13 & 14, T12N, R61W, 6th PM, Laramie County, Wyoming.

GLO record: 16"x10"x3" Sand Stone.

Found: GLO stone not found; Found a 1 ¼" Iron Pipe as set by the County Engineer, T.H. Baldwin in May 1951.

Set: nothing new set.

This corner was reestablished by the Laramie County Engineer, T.H. Baldwin in May 1951 with the survey of Laramie County Road No. 159. See T.H. Baldwin Bk. 33, Pg. 34-41, stored in the Laramie County Archives Office.



SEE MAP ON BACK OF THIS PAGE FOR TIES TO SURROUNDING CORNERS.

Date of Field Work: JULY 2013 Office Reference: _____

CROSS INDEX DIAGRAM

	2	3	4	5	6	7	8	9	10	11	12	13	14	15	16	17	18	19	20	21	22	23	24	25
A																								
B																								
C		6																						
D			5																					
E				4																				
F					3																			
G						2																		
H							1																	
I																								
J																								
K																								
L																								
M																								
N																								
O																								
P																								
Q																								
R																								
S																								
T																								
U																								
V																								
W																								
X																								
Y																								
Z																								

Land Surveyor / Firm / Address
Studley Land Surveying, PC
John J. Studley, PLS No. 4828
615 West Dale Blvd.
Cheyenne, WY 82009
Telephone: 307-287-4755

This corner record was prepared by me or under my direction and supervision.
 SEAL & SIGNATURE



RECORDED 9/03/2013 AT 9:59 AM REC# 623225 BK# 2356 PG# 683
 DEBRA K. LATHROP, CLERK OF LARAMIE COUNTY, WY PAGE 1 OF 2

CLOSING COR 21/22
WYO/COLO STATE LINE

CLOSING COR 22/23
WYO/COLO STATE LINE

C/L
COUNTY
ROAD
156

COUNTY
ROAD
158

SECTION 10
T.12N., R.61 W., 6TH PM
LARAMIE COUNTY, WYO.

